



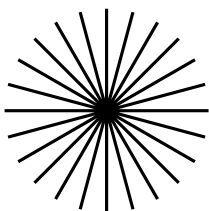
# KINGSTON & AREA ASSOCIATION OF MUSEUMS, ART GALLERIES AND HISTORIC SITES

**MEMBERSHIP  
GUIDE 2022**

# ABOUT

## KINGSTON & AREA ASSOCIATION OF MUSEUMS, ART GALLERIES AND HISTORIC SITES

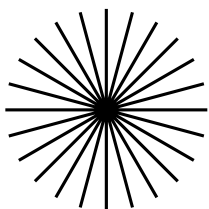
**WE ARE A NOT-FOR-PROFIT PROFESSIONAL NETWORK AND COLLABORATIVE RESOURCE HUB SUPPORTING THE KINGSTON AND AREA CULTURAL HERITAGE SECTOR.**



The Kingston & Area Association of Museums, Art Galleries and Historic Sites, otherwise known as KAM, first emerged 40 years ago as a community-initiated, professional support network to promote public awareness and increase engagement across local cultural heritage sites. Today, we serve our members through four areas of activity: professional development, advocacy, public engagement and collaborative partnerships. We provide access to professional learning and training; collaborative programming initiatives, collaborative marketing programs; peer mentoring, operational support resources; and professional networks at the regional, provincial and federal level. Our purpose is to model best practices and support our members in their work to engage audiences and communities in cultural heritage narratives and experiences.



Our members range from federally owned sites with professional staff, to sites which are member-owned and volunteer operated. Some operate seasonally; others are open year round. Many have specialist collections that tell the stories and histories of our communities from local, regional and national perspectives. From its inception, KAM was driven by the ideal that by working collaboratively, despite differences in size, mandates and resources, cultural heritage sites and organizations could quite simply; do better together, improving practice and strengthening their connections within and across communities.





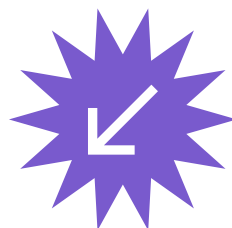
## OUR VISION



At KAM, we believe in the power of cultural heritage to **IGNITE IMAGINATION, DIALOGUE, and ENGAGEMENT**, thereby enriching and supporting vibrant, diverse and healthy communities. We envision a **RESILIENT, INNOVATIVE and RESPONSIVE** cultural heritage network integral to the identity, health and expression of the Kingston and area community.

---

## OUR MISSION



KAM's mission is simple - to champion, nurture and amplify Kingston and area's cultural heritage landscape by fostering **PROFESSIONAL DEVELOPMENT, ADVOCACY, PUBLIC ENGAGEMENT, and COLLABORATIVE PARTNERSHIPS.**



# WHY JOIN?

When you join KAM, you are joining a whole community of individuals and organizations who are dedicated to promoting and enhancing cultural heritage.

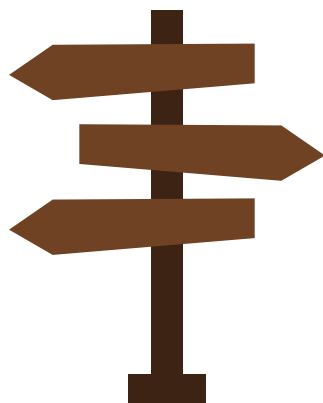


Our members define who we are as an organization, driving KAM's development over the past 40 years. Our members determine the focus and inspire the success of our four strategic pillars - Professional Development, Advocacy, Public Engagement and Collaborative Partnerships.

## OUR VALUES

KAM has evolved over time, but the values that drive what we do and how we do remain the same:

**EMBRACE COLLEGIALLY**  
**INSPIRE EXCELLENCE**  
**ENCOURAGE INNOVATION**  
**FACILITATE COLLABORATION**  
**EMBRACE DIVERSITY**  
**ACT WITH INTEGRITY**





# BENEFITS



**As a KAM member, you have access to a variety of resources and opportunities:**

- Free or subsidized professional development learning resources and training opportunities – both for individuals and for organizations;
- Benefit from bursary programs available exclusively to KAM members;
- Benefit from peer mentoring and operational support resources;
- Build your professional and collegial networks;
- Access EDII resources and support;
- Access sustainability & climate action resources and support, including the KAM Emergency Response Fund;
- Access digital platforms and resources, including virtual meeting support;
- Benefit from our Community Volunteer program;
- Support from and access to the City of Kingston Heritage Fund (for eligible applicants) – which KAM administers on behalf of the City of Kingston;
- Collaborative programming initiatives that engage with local and visiting publics;
- Collaborative marketing program and launchpad branding that promotes our region's cultural heritage and cultural tourism;
- Stay connected to local community stakeholders through collaborative partnerships and programs;
- Actively contribute to your local community and cultural heritage sector;
- Expand your skill portfolio through KAM committees;
- Have your say! – vote at our AGM; attend quarterly member meetings!
- Stay connected to the Ontario Museum Association and the wider cultural heritage sector through the Regional Museum Network.
- Stay connected to the Canadian Museum Association through KAM's corporate membership
- Access to the OMA job board through KAM's corporate membership
- Access Kingston Frontenac Public Library's collections and online resources (including LinkedIn Learning) through KAM's corporate membership;
- Benefit from and help inform KAM's advocacy efforts and activities at the local, regional, provincial and federal level in terms of sector resources, infrastructure and support!
- KAM is also proud to endorse the Workplace Inclusion Charter (KEYS) and is a member of the Ontario Living Wage Network.





# WHAT TYPE OF MEMBER ARE YOU?

KAM offers 5 types of memberships, renewable on an annual basis  
(1 January – 31 December)



## INSTITUTION

- You are a museum, art gallery or recognized historic site in Kingston and the surrounding area;
- You are incorporated as a not-for-profit organization; (OR)
- You are an agency or department of an incorporated organization; (OR)
- You are an agency or department of a municipal, provincial or federal government

## ASSOCIATE

- You are a group or organization in Kingston and the surrounding area which is sympathetic to the mission and purpose of KAM.;
- You are a historic church; a cultural heritage programming organization; a natural heritage site/organization; a heritage society/organization; an organization whose built heritage location is integral to your purpose and function.
- You are a cultural heritage institution who is out of, but borders our RMN area.

## INDIVIDUAL – COMMUNITY

- You are an individual (general community member or established cultural heritage professional) recognized by KAM as sympathetic to the mission and purpose of KAM.

## INDIVIDUAL – EMERGING PROFESSIONAL

- You are an emerging cultural heritage professional (EMP), within the first 10 years of career, and recognized by KAM as sympathetic to the mission and purpose of KAM.

## INDIVIDUAL – STUDENT

- You are currently in part-time full-time studies at a recognized post-secondary institution in a field related to cultural heritage.

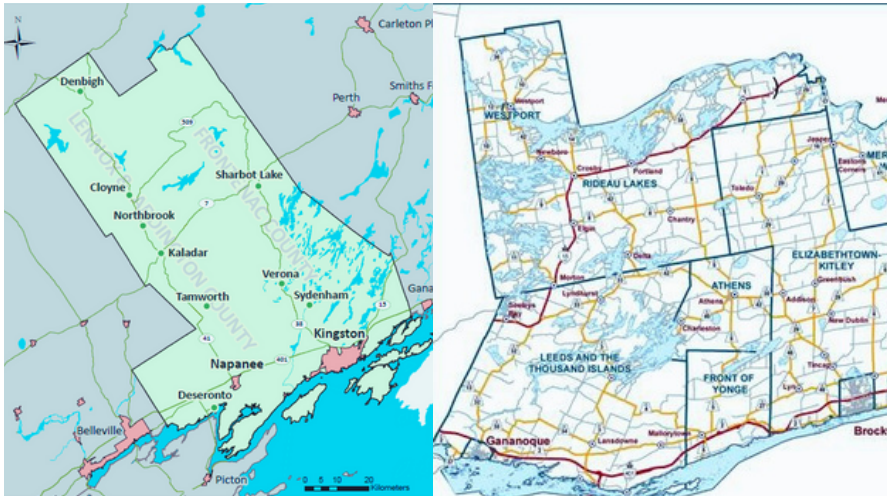
# MEMBERSHIP MAP



The Kingston & Area Association of Museums, Art Galleries and Historic Sites is this region's hub for the OMA's Regional Museum Network (RMN).

We represent and advocate for our members at the Ontario Museum Association and beyond. We serve cultural heritage sites and organizations across the following counties & townships:

- CITY OF KINGSTON;
- LENNOX & ADDINGTON (Addington Highlands; Stone Mills; Loyalist; Greater Napanee);
- FRONTENAC (North, Central, South; Frontenac Islands);
- LEEDS & GRENVILLE (Leeds & the Thousand Islands; Westport; Rideau Lakes; Athens; Front of Yonge; Elizabethtown & Kitley - from Brockville north to Smith Falls).

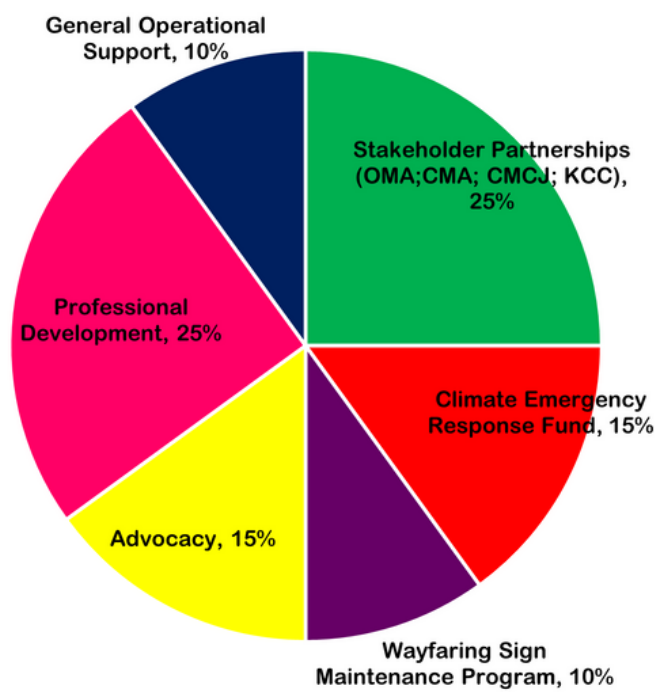




# WHERE DOES MY MEMBERSHIP FEE GO?

KAM's membership provides critical funding support for a variety of KAM initiatives and priorities, which in turn serve to benefit our members and our regional cultural heritage sector more broadly.

## MEMBERSHIP FEE BREAKOUT 2022





# FEE SCHEDULE 2022-2025



KAM is committed to maintaining an accessible fee structure for our members. However, as our member services grow, our fees need to grow as well.



The KAM Board of Directors has ratified the following fee schedule from 2022-2025 and has committed to capping membership fees at the 2025 rate.

Membership fees (+HST) must be paid in full by February 1st of each year (in order to be in good standing for the AGM).

Please note, a 2% monthly accrual will be charged on overdue accounts.

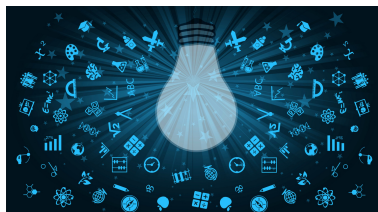
**KAM Membership Fee Schedule - 2022 - 2025**

✓	Membership Level	2022	2023	2024	2025
	Institution	\$ 60.00	\$ 75.00	\$ 85.00	\$ 100.00
	Associate	\$ 60.00	\$ 75.00	\$ 85.00	\$ 100.00
	Individual – Community Member / Cultural Sector Professional (supporter and avid interest in culture, community and history / mid or long-standing career in cultural sector)	\$ 30.00	\$ 30.00	\$ 35.00	\$ 35.00
	Individual – Emerging Professional (Cultural Sector Professional within first 10 years of career)	\$ 15.00	\$ 15.00	\$ 20.00	\$ 20.00
	Individual – Student	\$ 15.00	\$ 15.00	\$ 20.00	\$ 20.00



# CONNECT WITH FELLOW MEMBERS

KAM hosts quarterly members' meetings; each offering peer-led PD learning and roundtable discussions.



## ANNUAL GENERAL MEETING - MARCH 1ST 2022

Members in good standing have voting rights at our AGM - hear about the previous years activities and financial accounting, as well as upcoming priorities for the new operating year, vote in the Board of Directors and enjoy a keynote speaker PD presentation.

## Q2 MEMBER MEETING - JUNE 7TH 2022

Led by the Marketing and Analytics Committee (MAC), this meeting features a KAM member sharing their work/experience/project and/or expertise within this topic thematic.

## Q3 MEMBER MEETING - SEPTEMBER 27TH 2022

Led by the Professional Development Committee (PD), this meeting features a KAM member sharing their work/experience/project and/or expertise within this topic thematic.

## Q4 MEMBER MEETING - NOVEMBER 29TH 2022

Led by the Programming and Community Engagement Committee (PaCE), this meeting features a KAM member sharing their work/expertise/project and/or expertise within this topic thematic.

# OUR PARTNERS



## FUNDERS



## COMMUNITY



## SECTOR



Interested in working with KAM?  
Contact us - we'd love to chat!

# CONTACT US

Kingston & Area Association of Museums, Art  
Galleries and Historic Sites  
837 Princess St. Suite 302  
Kingston, Ontario, K7L 1G8  
(613)507-4014

Jamie McKenzie-Naish, Managing Director  
[managing.director@kingstonmuseums.ca](mailto:managing.director@kingstonmuseums.ca)

Debbie Holdich, Office Coordinator  
[info@kingstonmuseums.ca](mailto:info@kingstonmuseums.ca)

WEBSITE: [www.kingstonmuseums.ca](http://www.kingstonmuseums.ca)

INSTAGRAM: [@kingstonmuseums](https://www.instagram.com/kingstonmuseums)

FACEBOOK: [@kingstonmuseums](https://www.facebook.com/kingstonmuseums)

TWITTER: [@kingstonmuseums](https://twitter.com/kingstonmuseums)

BLOG: [kingstonmuseumsblog.com](http://kingstonmuseumsblog.com)



**kingston  
and area  
association  
of museums  
art galleries +  
historic sites**