

KAM Quarterly

The latest updates and info from KAM
www.kingstonmuseums.ca

Upcoming Q4 Member Meeting

Tuesday, November 29th, 2022

Guest Speaker Charlotte Gagnier, the Program Coordinator at Agnes Etherington Art Centre, will talk about the collaboration with Beyond Classrooms Kingston program from a host site perspective, the benefits of participation, and how its balanced with their own in-house programming.

KAM Benchmark Survey 2022

This survey provides the data for the Cultural Heritage Dashboard, and as part of our work with the dashboard project – we have updated how we collect this survey data. In the past, we have used Google forms, but now members can submit their data through the KAM website!

Please note, 2022 is a transition year. Please complete both the Quarterly and Annual Member Surveys with your annual data for 2022 by DECEMBER 20th 2022.

To complete the *Quarterly Member Survey*, [follow this link](#).

To complete the *Annual Member Survey*, [follow this link](#).

Don't have your password to login? Email us at info@kingstonmuseums.ca

KAM Office Closed for the Holidays

December 19th, 2022 - January 8th, 2023



Re-Org at the West Parry Sound District Museum

WITH NADINE HAMMOND, CURATOR/MANAGER &
AMY SULTANA, COLLECTIONS SUPERVISOR

Thursday, January 26th, 2023 -

10:00 am - 12:00 pm - Online

KAM Members - Free

Non-Members - Free



~Rescheduled~

Due to Snow & Power Outage in Parry Sound!

Principles & Approaches to Re-Org: How to Reorganize & Reclaim Museum Storage

New Date: January 26th, 2023

Presenters: Nadine Hammond – Curator/Manager
and Amy Sultana – Collections Supervisor

In 2015, the West Parry Sound District Museum was lucky enough to be chosen to take part in Re-Org Canada, an initiative designed to assist museums dealing with poorly documented collections and inadequate storage conditions. Join Curator/Manager, Nadine Hammond, and Collections Supervisor, Amy Sultana, as they discuss what the project entailed, how they tore apart the collections storage, and some of the ventures that arose from the initiative including a Found in Collection project and an exhibition entitled “Look What We Found!”

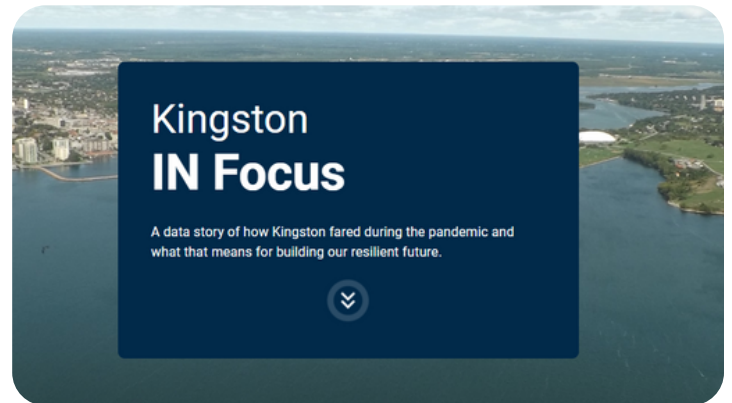
This webinar will be free to all participants, both KAM members and non-members and will be held over Zoom.

[Please Register Here](#)



Make Data Informed Decisions with Kingston IN Focus!

Kingston IN Focus is a collaborative project between Queen's University, the City of Kingston, Kingston Economic Development Corporation and the Kingston and Area Association of Museums, Art Galleries and Historic Sites. This work was supported by Mitacs through the Mitacs Business Strategy Internship.

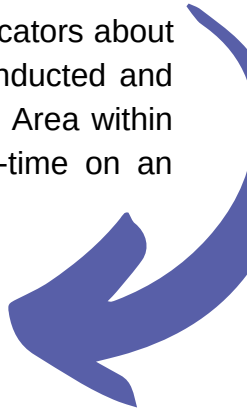


Kingston IN Focus is comprised of 8 different dashboards that visualize specific data indicators about the Kingston region. Each dashboard also includes access to dissertation research conducted and completed by Queen's University graduate students which focuses on Kingston and the Area within the given dashboard topics. The dashboard is a public website and updated in real-time on an ongoing basis.

The dashboards include:

- Local Economy
- Economy
- Community Health
- Mobility
- Environment
- Housing
- Cultural Heritage
- Demographics

Visit the website at kingstoninfocus.ca/



If you use and/or visit the Dashboard, don't forget to complete the Community User Survey! Researchers with the Department of Geography & Planning at Queen's University want to understand how individuals interact with this public data resource!

Stay Tuned, Membership Renewals Coming for 2023!

Renewal invoices will be emailed to members between Dec. 15th 2022 and Jan. 15th 2023. All renewals must be submitted & paid to KAM by February 28th 2023 in order to be in good standing for the AGM in March 2023.

Questions? Email us: info@kingstonmuseums.ca





THE ROSAMOND WOOLEN COMPANY AND THE MISSISSIPPI TEXTILE MUSEUM

The site of the Mississippi Valley Textile Museum was once the annex of the Rosamond Woolen Company, a textile operation founded in Almonte in 1861 which specialized in making material for suits.

The Rosamond Woolen Company was one of many mills and textile companies operating in the Mississippi Valley region at the turn of the 20th century.

-Guest Writer, Emma Wyse



Winner of the 2021-22 Ontario Historical Society Dorothy Duncan Public History Award for the Millworkers' Staircase & Riverwalk Project!

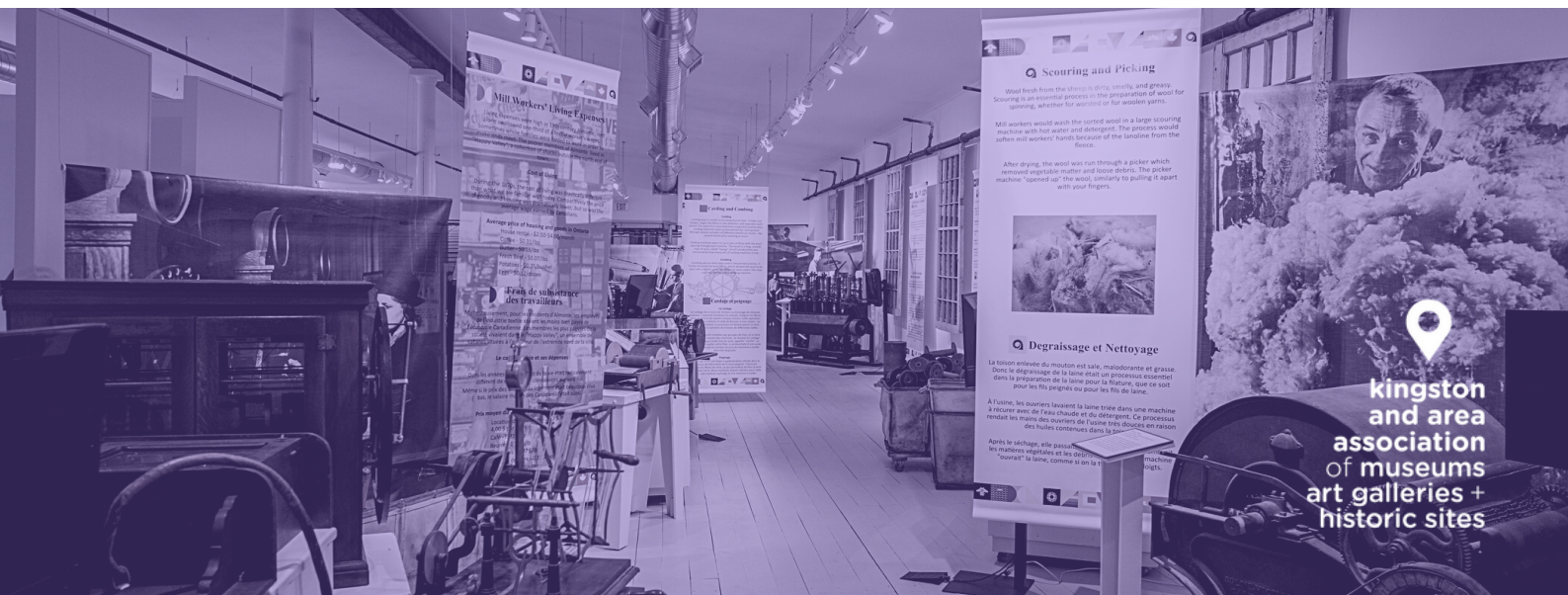
[Click to Read More](#)

Explore Kingston's cultural heritage with our Kingston Association of Museums Blog!

Let's Stay Connected!

Follow us on social media for Professional Development resources, knowledge on member events, opportunities and helpful links!

Check out @kingstonmuseums on...



kingston and area association of museums art galleries + historic sites